

Mengatasi Error 6000 canon IP 2700



Langkah - langkahnya sebagai berikut

1. Buka cover printer dan pastikan posisi house cartridge berada di sisi **sebelah kanan**, kemudian **matikan** (Normal).
2. Apabila house cartridge tidak bisa di gesekan, matikan printer dan **geser secara manual ke posisi sebelah kanan**.
3. Pastikan **encoder (get or plate & lever)** dalam keadaan baik, artinya tidak ada bercak tinta yang menempel. Kalau ada bercak tinta, bersihkan dengan menggunakan tissue halus, kalau anda memiliki cleaner, silahkan pakai sedikit cleaner untuk membersihkannya. Kalau terpaksa, bisa pakai air agar permukaan tissue yang basah bisa digunakan untuk membersihkan bercak tinta.
4. Cek roll **penarik kertas**, ada dibagian ini diputar printer. Apabila bisa di putar ke bawah dengan normal, maka berarti tidak ada masalah pada roll sensor penarik kertas.
5. Kemudian, coba putar ke atas. Kalau susah, berarti dirintihlah masalahnya.
6. Anda bisa mencoba dulu penutup printer bagian atas untuk memudahkan proses selanjutnya. Tapi kalau memang tidak mau ngotot/longkar/bongkar, anda bisa selipkan jari kebagian roll ke arah kemutihan putar kertas atau searah jarum jam.
7. Pastikan sampai ada bunyi "**kluk**" di roll utama bagian kanan belakang.
8. Nyalakan kembali printer anda. Amati, apakah sudah berhasil atau belum, house cartridge bisa bergerak normal atau tidak.
9. Kalau belum, maka anda harus cek secara manual mekanik utama (entah lupa nama resminya) yang ada dibagian belakang sebelah kiri kanan.
10. Putar belahan roll geser yang paling besar: kertas sampai ada tanda bunyi "**kluk**".
11. Silahkan nyalakan kembali printer anda, dan amati perubahannya.
12. Berhenti atau Tidak. Silahkan mencoba.



File Name: Canon ip 6000 manual.pdf

Size: 3884 KB

Type: PDF, ePub, eBook

Category: Book

Uploaded: 15 May 2019, 23:51 PM

Rating: 4.6/5 from 624 votes.

Download Now!

Please check the box below to proceed.



I'm not a robot



reCAPTCHA
Privacy - Terms

Book Descriptions:

Canon ip 6000 manual



Once a perfect nozzle pattern is achieved, print 5 copies of the If your printer can not do this, do Run some cleaning cycles or get new cartridges. Do not proceed until you The Purge6 image can be found on the diskette included with your You can also get it from the The best way to do this is to first print a Nozzle pattern, using the printer utility software provided by Canon. Once a perfect nozzle pattern is achieved, print 5 copies of the purge6.tif image using the Plain Paper and Standard Quality settings on the printer. Pull back on the plunger, all the way. Save these orange caps as they are not available for sale separate from a CFS unit. PARTIALLY install the CFS cartridges by placing them in their installed position but do not push the cartridges all the way down. Locate the Bridge Bracket from your package and install it as shown in the photo. Before peeling the protective film from the double sided tape strips on the bridge bracket, place it in the location described below and as seen in the photo below. This will leave the remaining tube length at the left side of the printer ready to be trimmed for connection to the bottle fittings. Every time the Canon iP6000D CFS system is removed from the printer the prime ink in the tubes will drain back to the bottles. After a few installations and removals the ink in the. This has worked on many Canon printers in the past. It gives the air bubbles in the ink a chance to rise to the surface and get out of the printhead. Service Manual New technology, technical information and FAQs Frequently Asked Questions, etc. Refer to the illustrations in the separate Parts Catalog. All trademarks and copyrights in the published materials belong to their respective owners. This page requires Javascript. Modify your browsers settings to allow Javascript to execute. See your browsers documentation for specific instructions. To install your download click on the name of the downloaded file. Scroll down to see your support options. <http://airflow-skateboards.com/upload/file/drag-chain-conveyor-design-manual.xml>

- **canon ir 6000 manual pdf, canon ir 6000 service manual pdf, canon ir 6000 service manual pdf free download, canon ir 6000 service manual free download, canon ir 6000 service manual, canon ip 6000 manual, canon ip 6000 manual download, canon ip 6000 manual pdf, canon ip 6000 manual free, canon ip 6000 manual software, canon ip6000d manual.**

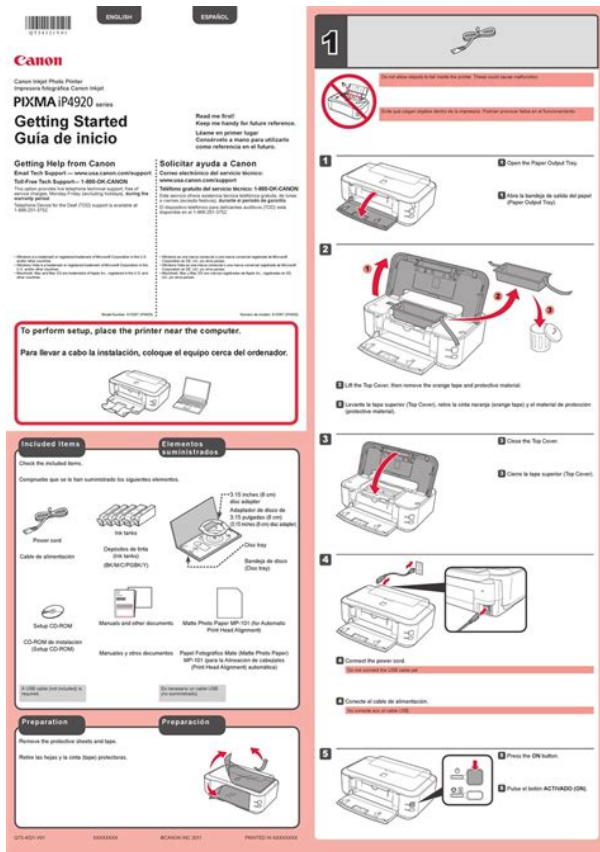
| FIGURE 9 CARRIAGE UNIT | | FIGURE 10 PURGE UNIT | | | |
|------------------------|--------------|-------------------------|------|--------------|--------------------|
| | | | | | |
| NUM. | PART # | DESCRIPTION | NUM. | PART # | DESCRIPTION |
| 9-1 | QC1-4284-000 | FLM, TIMING SLIT STRIP | 10-1 | QM2-1500-000 | PURGE UNIT |
| 2 | QA4-0999-000 | SPRING, LEAF | 2 | QC1-4390-000 | GEAR, TRANSMISSION |
| 3 | QC1-4280-000 | CLIP, SHAFT R | 3 | QC1-4875-000 | PLATE, PURGE |
| 4 | QC1-2289-000 | RING, CARRIAGE SHAFT | | | |
| 5 | QC1-4282-000 | CAM, CARRIAGE SHAFT R | | | |
| 6 | QC1-4279-000 | CLIP, SHAFT L | | | |
| 7 | QC1-2510-000 | CLIP, CARRIAGE SHAFT | | | |
| 8 | OK1-2545-000 | MOTOR, CARRIAGE | | | |
| 9 | QC1-4381-000 | CAM, CARRIAGE SHAFT L | | | |
| 10 | QC1-5299-000 | LABEL, TANK FOR IP6000D | | | |
| 11 | QM2-1499-000 | CARRIAGE UNIT | | | |
| 12 | QC1-4274-000 | SHAFT, CARRIAGE | | | |
| 13 | QL2-0597-000 | IDLER PULLEY ASSY | | | |
| 14 | QC1-2290-000 | SPRING, COIL | | | |

Copyright 2004, Canon U.S.A. This technical publication is the proprietary and confidential information of Canon U.S.A., which shall be retained for reference purposes by Authorized Service Facilities of Canon U.S.A. Its unauthorized use is prohibited. 5 of 6

You can also click one of these links to search our extensive Knowledge Base or visit the Canon Community Forum. The driver may be included in your OS or you may not need a driver.

Recommended Drivers File Name Date File Size Optional Drivers File Name Date File Size Recommended Software File Name Date File Size Optional Software File Name Date File Size Recommended Manuals File Name Date File Size Optional Manuals File Name Date File Size

Warranty repair or replacement shall not extend the original warranty period of the Product. A dated proof of purchase is required at the time of warranty service. A copy of your dated bill of sale will satisfy this requirement. This warranty does not cover any accessories, or any consumables, such as paper or ink cartridges, as to which there shall be no warranty or replacement. Repairs of such Canon brand peripheral equipment shall be governed by the terms of the Separate Warranty. The sole warranty, if any, with respect to such nonCanon brand items is given by the manufacturer or producer thereof. If the problem cannot be corrected over the telephone, and you elect the InstantExchange option, a reference number will be issued to you. You will be asked for the Product serial number and other information pertaining to your Product and for a ship — to location for the replacement Product must include street address. The Canon USA repair facility will ship out the replacement Product prepaid by Canon USA. After receipt of the replacement Product with instructions and a prepaid waybill, follow the enclosed instructions on how to ship your product to the Canon USA repair facility. Your Product must be returned in the shipping carton in which the replacement Product was packed and include the reference number, A COPY OF YOUR DATED PROOF OF PURCHASE BILL OF SALE, and a complete explanation of the problem. Canon USA does not guarantee same day shipment in the event of the occurrence of factors beyond its reasonable control. <http://www.derma-dts.de/files/drager-5700-user-manual.xml>



The replacement Product you receive may be a refurbished or reconditioned unit and will be covered for the balance of the period remaining on your original limited warranty. InstantExchange warranty service is subject to the availability of refurbished or new replacement units. Canon U.S.A., Inc. One Canon Park Melville, NY 11747 USA Scroll down to easily select items to add to your shopping cart for a faster, easier checkout. Visit the Canon Online Store Tired of trying to make your handwriting legible in order to illustrate a point. For your next important meeting, you can make impressive charts and graphs with these clear, overhead transparencies, printed right from your Canon Color Bubble Jet printer. Package includes 50 sheets. Bubble Jet Simplicity. Glossy, topquality paper for vibrant, lifelike color images you wont be able to tell from the original. Has the same weight and feel as actual photo paper. Package includes 20 sheets. Optimize output resolution to create nearphotographic images. This paper is great when you want highquality color output to produce winning reports and eye-catching graphics. Use with genuine Canon Photo Inks for true photoquality output. Package includes 100 sheets. Package includes 50 sheets. Simply print your photos on the included 2 sided paper, slide the pages easily into the album, and share your memories! Simply print your photos on the included 2 sided paper, slide the pages easily into the album, and share your memories! This paper yields a glossy finish and exceptionally right color, giving your images the look and feel of a traditional photograph. Package includes 120 sheets. This paper yields a glossy finish and exceptionally right color, giving your images the look and feel of a traditional photograph. Package includes 50 sheets. This paper yields a glossy finish and exceptionally right color, giving your images the look and feel of a traditional photograph. Package includes 20 sheets.

This paper yields a glossy finish and exceptionally right color, giving your images the look and feel of a traditional photograph. Includes 20 sheets per pack. Learn about the technology behind the paper. Package includes 20 sheets. Package includes 15 sheets. High quality photos print right onto a sticker sheet, so just peel and stick. 16 stickers per sheet. See the appropriate procedure according to your operating system. Wait until the following screen disappears. Wait until the following screen disappears. You may download and use the Content solely for your personal, noncommercial use and at your own risks. Canon shall not be held liable for any damages whatsoever in connection with the

Content, including, without limitation, indirect, consequential, exemplary or incidental damages. You shall also not and shall not let others reproduce, modify, reformat or create derivative works from the Content, in whole or in part. We have confirmed that the following phenomenon may occur during use of the EOS1D X Mark III digital SLR camera. A new firmware release is planned for early April; once the new firmware is ready, we will make an announcement on our website. Sortimentet med kompakta EOS M och EOS Rsystemkameror i fullformat ger kraften hos en spegelreflexkamera i ett kompakt kamerahus. Vi gör allt vi kan för att förutse, förbereda och minska eventuella avbrott i vår verksamhet. Vara reparationstider kan bli något längre och vi vet inte ännu när vi kan återgå till vår normala servicenivå. Vi beklagar de besvar detta innebär för dig och tackar för din förståelse och ditt stöd i vårt fortsatta arbete med att hålla verksamheten igång på bästa möjliga sätt. Vi meddelar dig så snart vi har ny information. Release 6.8 Copyright C 2010 Canonical Ltd. This is free software; see the source for copying conditions. There is NO warranty; not even. Code 6000 constantly, and there is absolutely nothing blocking the feed. Manuals and customer service are useless.



<https://skazkina.com/ru/40-elpto-manual>

In addition, it uses an incredible amount of ink and the cartridges are hugely expensive. Went to the web and found the official manual of 833 pages of advanced and often selfcontradictory text, where all I want is to begin at the beginning to print, do this, to scan, do that, to copy, do the other. This is a complex and perhaps technically very good machine, but if you can't get it started, it's just a piece of junk. Support are friendly enough but nothing they have said overcomes the userhostility of the machine itself and Canon's idiotic presentation. Buying Canon was a big mistake. Please advise it was stuck. So I pushed it over a little on the left, turned on the device and that seemed to work. Thanks Jonathan !! I have spent far more than an hour trying to find a fix for this and the Canon sites say nothing whatsoever about the ink cartridge carrier being stuck. Immediate solution. Sheesh. But then I discovered another layer of the feeder mechanism inside the outer feeder cover. And lo and behold, a page stuck deep inside the printer. Irritating that a stuck sheet cannot be reported correctly. My model is a MG7550, so the approach may be slightly different. Either it is stuck or something is physically inside blocking the movement. See if that works. I didn't even think to check the trays paper was stuck was in it. It solved my problem!!! Paper had been repeatedly jamming at the back of the paper tray. First solution was to remove the paper tray and then turn over the printer on its side to find jammed paper underneath at the rear. But that wasn't enough and I still had the 6000 and then 6001 error. Going deeper I found that I could remove the panel at the rear of the printer AND another curved component just behind that. This revealed another jammed sheet which was easy to remove. The two printer pieces were easy to put back in place. Then I had to restart the printer, after which it did that Canon thing of clicking a whirring for a few minutes before finally printing again.

<http://antenasmunarriz.com/images/bsa-e-filing-user-manual-section-5.7.pdf>



Knowing how the printer comes apart is so helpful. Awesome! Roger G Tampa! Remove the object they they are placed in front of printer. Clean if there is any piece of paper or something else in printer. Clean the encoder strip with soft cloth. The ink cartridges would just stay on the far left of the printer. I moved them to right side of the printer and saw some paper stuck in some white cogs on the far left of the printer quite hard to see, I had to stand the printer up on its side. After that I restarted and no more error code, working fine now. Printer now working thanks And on the far left side found a small piece of paper toll ticket stuck in the gears. I didn't see it before because the cartridge was blocking the view. It fixed the issue for me. I dont know if this will solve it, but this is what I did and it cleared the error message. After I cleared it I was getting support code 6000 I monkeyed with it for an hour before finding this thread. The carrier was at the left side so I moved it to the right to the park position. Back in business. Removed paper Tangled in cogs on far left.No paper was stuck anywhere check front and back. The ink holder was on the far left. I manually pull it back to the far right. Then I did a factory reset find the stop button by starting the printer and stop it again. Then press the stop button two seconds, then keeping it pressed, press the power button. Release stop button and press it 5 times. Release power button. After doing all this, it start working again I solve this issue through the canon pixma printer setup website. EOS M og EOS Rserieerne af spejllose fullframekameraer leverer samme styrke som et digitalt spejlreflekskamera i et kompakt kamera. Du kan ogsa fa vist vores Ofte stillede sporgsmål FAQs og vigtige informationer om dit PIXMAprodukt. Nar du er pa din produktside, kan du bruge fanerne til at navigere mellem de forskellige indholdstyper.

<http://www.gelbyson.com/images/bsa-exam-manual-2014.pdf>



Fa mere at vide om vores brug af cookies og rediger dine cookieindstillinger her. Du accepterer vores brug af cookies pa din enhed ved at forsttte med at bruge vores webside eller ved at klikke pa Jeg accepterer. Det tager 1 minut og vil hjelpe os med at forbedre vores supportwebsted. For the best experience on our site, be sure to turn on Javascript in your browser. Track your order Sign in Speedy Reorder Help Contact us 0161 968 5994 Search Search Search Basket. Ex VAT Inc VAT Menu Menu Ex VAT Inc VAT Ink Cartridges Apple Ink Brother Ink Canon Ink Citizen Ink Compaq Ink Dell Ink Epson Ink Fujitsu Ink HP Ink IBM Ink Lexmark Ink Kodak Ink Neopost Ink Oki Ink Olivetti Ink Panasonic Ink Philips Ink Pitney Bowes Ink Ricoh Ink Samsung Ink Sharp Ink Star Ink TallyGenicom Ink Xerox Ink Toner Cartridges Apple Toner Brother Toner Canon Toner Dell Toner Epson Toner HP Toner IBM Toner Konica Minolta Toner Kyocera Toner Lexmark Toner OKI Toner Olivetti Toner Panasonic Toner Ricoh Toner Samsung Toner Sharp Toner Xerox Toner Label Tape Brother Label tape Dymo Label tape Paper Glossy Photo Paper Matte Photo Paper Paper Rolls Plain Paper Premium and Specialist Paper SemiGlossy Photo Paper TShirt Transfer Media Printers Help Contact Us Search Search Search Search My Account My Account Sign in SpeedyReorder Track My Order Basket FREE nextday delivery on everything However, due to the COVID19 crisis, a minority will take a day or more than expected. If your order hasnt arrived by the estimated delivery date, please allow 5 days before contacting us. For further info, click here. It excludes products that are not new and immediately available, online promotions such as special, bonus or free offers that are not at everyday prices and products which are sold under different terms and conditions, such as special financing, contract pricing or volume discount pricing. In 98% of cases, orders placed on Monday to Friday before 515pm will arrive on the next working day.

To see other delivery options and our delivery schedule click here. Typically uses Royal Mail 1st class, though some orders may be upgraded to courier. To ensure you are not out of pocket, we will refund 100% of the difference, if within 7 days of your purchase you find the same product brand and model being offered online at a lower price. It excludes products that are not new and immediately available, online promotions such as special, bonus or free offers that are not at everyday prices and products which are sold under different terms and conditions, such as special financing, contract pricing or volume discount pricing. Delivery next day was a super surprise!, so all in all, it was very good. Thoroughly recommended. 100% By Richard H on 9 Mar 2020 The Canon cartridges arrive promptly and in good condition, and the timely reminders from Cartridge Save

contain a useful link back to previous purchases to speed up the ordering process. A fair price for a top brand that prints a good quality image. 100% By Michael Hall on 17 Feb 2018 Exactly the right product for my old Pixma iP3000, delivered by return.Thank you to all concerned. 100% By Richard on 18 Jan 2018 Cartridges arrive punctually and in good condition, and represent good value for money. 100% By Richard Hart on 29 Oct 2017 As described; arrived punctually; value for money. Page Youre currently reading page 1 Page 2 Page 3 Page 4 Page 5. These numbers are based on manufacturer quoted values and are for comparison purposes only. Whatever the reason for returning items to cartridgesave.co.uk, you will never pay a penny for postage. Best value Genuine 2.4p per page For most cartridges this is based on 5% coverage on A4 paper. These numbers are based on manufacturer quoted values and are for comparison purposes only. 42.73 Sorry this item is currently out of stock. Whatever the reason for returning items to cartridgesave.co.uk, you will never pay a penny for postage. 42.

<https://retentionstudentexperience.com/wp-content/plugins/formcraft/file-upload/server/content/files/162713e6d97f3f--bpi-connecticut-valley-arms-hunterbolt-magnum-manual.pdf>

73 Sorry this item is currently out of stock. A fair price for a top brand that prints a good quality image. 100% By Michael Hall on 17 Feb 2018 Exactly the right product for my old Pixma iP3000, delivered by return.Thank you to all concerned. 100% By Richard on 18 Jan 2018 Cartridges arrive punctually and in good condition, and represent good value for money. 100% By Richard on 19 Jan 2017 product arrived on time and were competitively priced by todays prices 100% By John Price on 13 Jan 2017 A good way to buy ink for my printer also good value for money. The order was delivered promptly and was as described. Whatever the reason for returning items to cartridgesave.co.uk, you will never pay a penny for postage. 2.5p per page For most cartridges this is based on 5% coverage on A4 paper. These numbers are based on manufacturer quoted values and are for comparison purposes only. 32.77 Sorry this item is currently out of stock. Whatever the reason for returning items to cartridgesave.co.uk, you will never pay a penny for postage. 32.77 Sorry this item is currently out of stock. Used these before with good results. Great price and prompt service. 100% By Harry Fitzgerald on 23 Feb 2020 I always use this company as the delivery is always the next day,would highly recommend. 100% By Kelly on 16 Jul 2017 Everything prefect 100% By Helen on 1 Jun 2017 Easy to use online ordering. Very quick delivery service. Very good that CartridgeSave still do the refills for my relatively old Canon printer which is still giving excellent service. CartridgeSave goods are securely packaged and each cartridge is in individual outer packaging which unlike other similar refill companies dont dry out quickly before they are even installed. Oh yes very good prices too. Thanks CartridgeSave. Would highly recommend.

www.csnjl.com/userfiles/files/compost-bin-manual.pdf

100% By archie mcilquham on 25 Apr 2017 great company service was excellent would recommend this company to my friends Page Youre currently reading page 1 Page 2 Page 3 Page 4 Page 5. Pack of 4 ink cartridges Premium brand recycled ink cartridges Made using recycled Canon cartridges, these cartridges are a direct replacement for the Canon versions. Manufactured to strict quality standards, our premium cartridges produce high quality prints and are very reliable — in fact, we use them in our offices and recommend them to friends, family and other businesses. Premium brand recycled ink cartridges Premium brand recycled ink cartridges Made using recycled Canon cartridges, these cartridges are a direct replacement for the Canon versions. Manufactured to strict quality standards, our premium cartridges produce high quality prints and are very reliable — in fact, we use them in our offices and recommend them to friends, family and other businesses. 3year warranty 3year warranty on our ownbrand cartridges We are proud of our ownbrand cartridges, so we've made trying them a no-brainer. If within three years of purchase you have any problem whatsoever, we'll happily offer either a replacement or a refund. Returning items is easy—it takes just a few minutes. But our return rate is very low, so you'll be unlikely to need it. We are confident

that no other ownbrand cartridges are better than ours. They produce vibrant prints with accurate colour densities and dark blacks—and their page yields are as good as the genuine, if not better. Give them a try, and see why our customers love them. Our ownbrand cartridges are incredibly reliable for three reasons 1. We are the UK's biggest seller of ownbrand cartridges, and we have invested a lot in optimising them. 2. We are dedicated to quality. Every ownbrand cartridge is performance tested before it leaves the factory. 3. We constantly monitor customer feedback, and quickly resolve any issues.

Printer protection guarantee Our cartridges won't damage your printer—guaranteed Some people worry that ownbrand cartridges might damage their printers. We know from experience that ours don't. To reassure you, we guarantee that we'll repair or replace your printer—for free—in the unlikely event that it gets damaged by an ownbrand cartridge. This is regardless of how old your printer is. We can afford to offer this because problems are almost unheard of. Some people whose printers are less than a year old worry that an ownbrand cartridge might invalidate the manufacturer's warranty. This isn't true. By law, the manufacturers aren't allowed to invalidate your warranty if you use ownbrand cartridges. If something does go wrong, and our ownbrand cartridges are to blame, we'll take over the manufacturer's warranty, offer you phone support and repair or replace your printer if needed. In summary, there's zero risk in using our ownbrand cartridges. Best value Premium 1.3p per page For most cartridges this is based on 5% coverage on A4 paper. Excellent value, I'd recommend them to any Canon user. As always Cartridge Save delivery arrived promptly one working day after the order. 100% By Bob S on 13 Apr 2017 No compatibility problems with Canon i865 and print quality was very good. Pack of 3 ink cartridges Premium brand recycled ink cartridges Made using recycled Canon cartridges, these cartridges are a direct replacement for the Canon versions. In summary, there's zero risk in using our ownbrand cartridges. 1.4p per page For most cartridges this is based on 5% coverage on A4 paper. Ask us a question were happy to help. We are currently answering questions in 8 minutes Ask a question Questions asked between 9am and 5pm, Monday to Friday excluding bank holidays will be answered within 30 minutes.

First name Last name Email Brief title of your question example colour ink cartridges Enter the details of your question here Publish this question to help other shoppers Ask Question No questions have been submitted yet! It delivers highquality photos and boasts a reasonably fast performance. The Canon Pixma iP6000 printer features an LCD display to view and edit photos, and offers direct printing for cameras and memory cards with the PictBridge port and media reader. The only trouble with the Canon Pixma iP6000 is it is slow when it comes to business applications. The Canon Pixma iP6000 also has PictBridge, memory card readers and IrDA for printing directly from mobile phones. The control panel is on the top righthand side of the unit, and it features a 2.5 inch colour LCD display and easytouse control buttons. It is easy to print photos directly from cameras and other devices as the Canon Pixma iP6000 has memory card slots, a PictBridge port, and IrDA plus the LCD display allows users to easily edit and preview photos. The iP6000 photo printer also has trouble with print speed for business applications. Continue shopping View basket and checkout Think this page can be improved. Leave a suggestion optional Customer Services Your Account Help Delivery info Easy returns Contact info Customer Info About us Award winning services Terms and conditions Privacy policy 100% secure shopping Recycling Slavery statement Our Guarantees 100% satisfaction guarantee For further info, click here. It excludes products that are not new and immediately available, online promotions such as special, bonus or free offers that are not at everyday prices and products which are sold under different terms and conditions, such as special financing, contract pricing or volume discount pricing. In 98% of cases, orders placed on Monday to Friday before 515pm will arrive on the next working day. To see other delivery options and our delivery schedule click here.

Typically uses Royal Mail 1st class, though some orders may be upgraded to courier. To ensure you

are not out of pocket, we will refund 100% of the difference, if within 7 days of your purchase you find the same product brand and model being offered online at a lower price. It excludes products that are not new and immediately available, online promotions such as special, bonus or free offers that are not at everyday prices and products which are sold under different terms and conditions, such as special financing, contract pricing or volume discount pricing. For further info, click here. It excludes products that are not new and immediately available, online promotions such as special, bonus or free offers that are not at everyday prices and products which are sold under different terms and conditions, such as special financing, contract pricing or volume discount pricing. In 98% of cases, orders placed on Monday to Friday before 515pm will arrive on the next working day. To see other delivery options and our delivery schedule click here. Typically uses Royal Mail 1st class, though some orders may be upgraded to courier. To ensure you are not out of pocket, we will refund 100% of the difference, if within 7 days of your purchase you find the same product brand and model being offered online at a lower price. It excludes products that are not new and immediately available, online promotions such as special, bonus or free offers that are not at everyday prices and products which are sold under different terms and conditions, such as special financing, contract pricing or volume discount pricing.

<http://www.raumboerse-luzern.ch/mieten/40-elpto-manual>